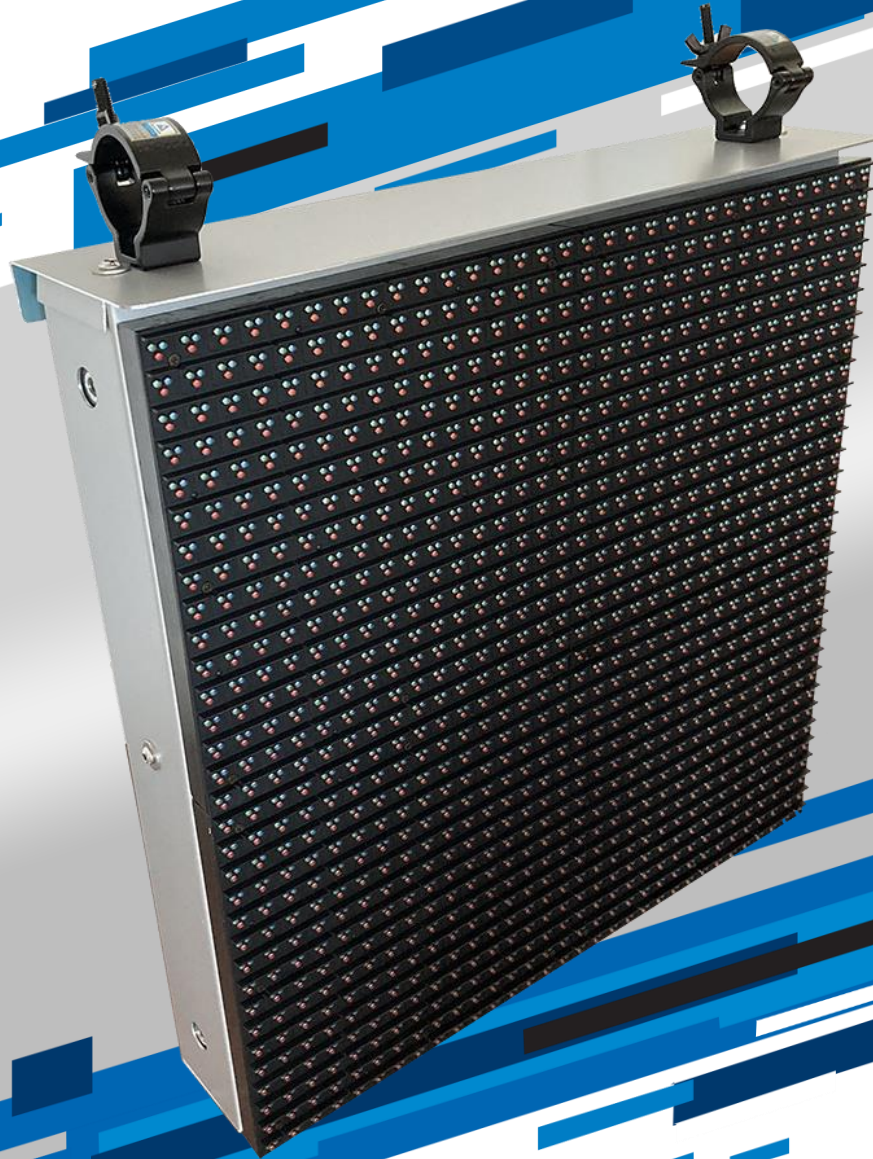




MOTORSPORT



T3 Flag Panel



HOMOLOGATED
PRODUCT



T3 Digital Flag Panels are an ideal solution for Grade 3 like circuits or other events because they are cost-effective and still have advanced LED technology that provides great visibility and clarity.

The large display area makes it easy for drivers to see and understand the flags, even from a distance, while safety is always a priority with remote operation and integration with software systems.

The panels' remote operation allows marshals to control the flags from a safe location away from the track, reducing the risk of injury from debris in the event of an accident and improving marshal's security.

EM Motorsport's T3 Digital Flag Panels are also fully integrated with EM Motorsport's EFS Race Control Manager Software and Marshalling System Software.

- Fully compliant with FIA® 3504-2019 and FIM FRHPIp-01 2020 Standard.
- Displays traditional trackside warning flags such as the yellow, blue and red Flags as well as complex flags such as the Safety car, Slippery surface, black and orange, and the chequered flag, etc.
- Can be controlled via remote control, allowing flag marshals to remain in safe area
- Gives Race Control full control of trackside flags even if marshals are not present
- Fully integrated with FIM systems
- Fully integrated with EM Motorsport's EFS Race Control Manager Software



HOMOLOGATED
PRODUCT

Technical Specifications

Environmental	Operating Temp	-15 to +65 °C
	Ingress Protection	IP55 (IP66 for the connectors)
	Voltage Input Supply	110V to 220V AC (24V option available)
Mechanical	Size	523x512x133 mm
	Weight	12 Kg
Graphic	Main Graphic Area	32x32 pixels
	Back repeater graphic Area	16x16 pixels
	Brightness	Up to 18.000 cd/m2
	Viewing Angle	80°
	Adjustable Brightness	4 levels
Connectivity	Ethernet	10/100mbps
	Fiber optic	External option available
	Local Console	Up to 400m
Ventilation	Back fans	2
	Bottom fans	na

Mechanical drawings

